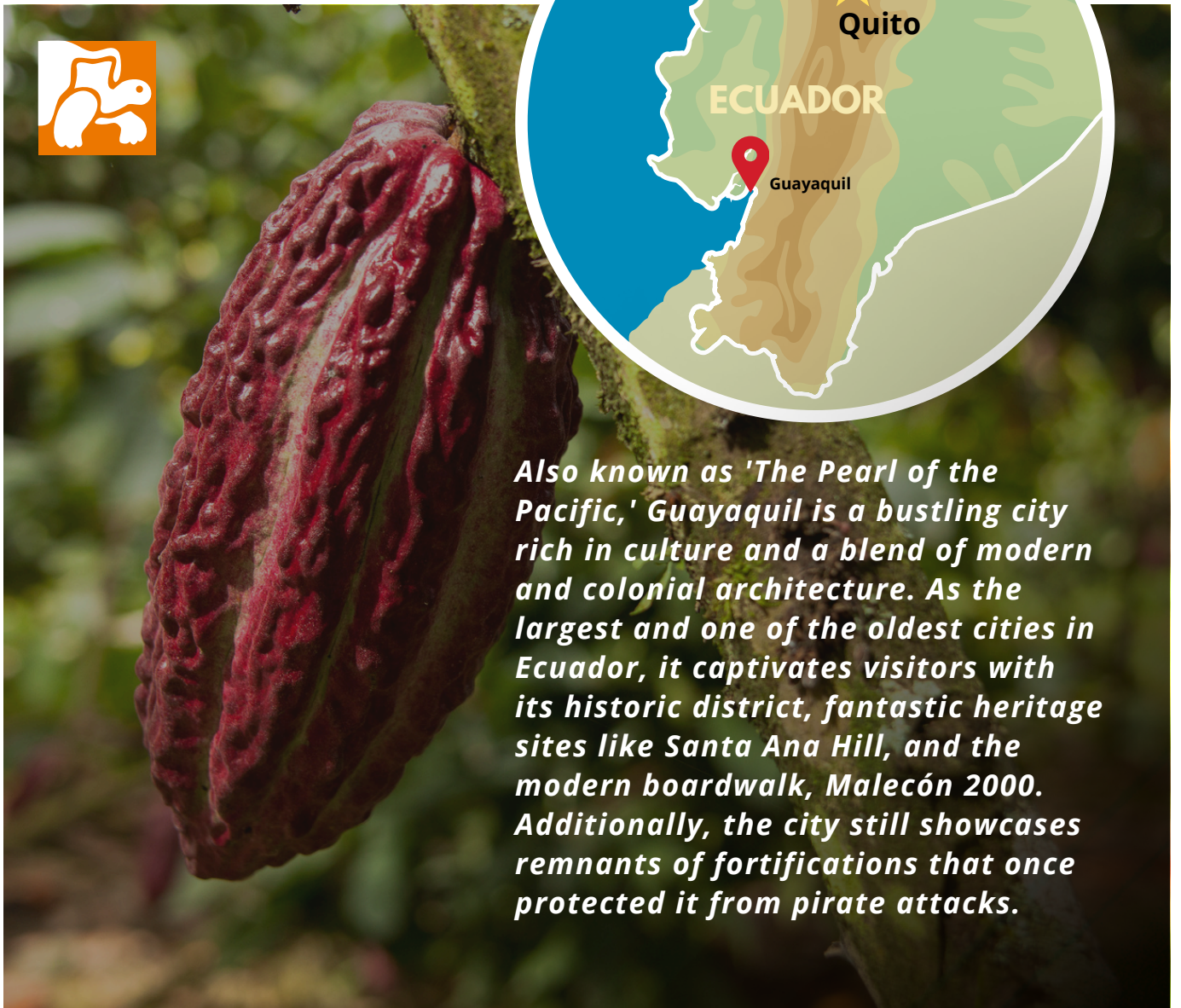


TROPICAL CHOCOLATE JOURNEY

Full Day Tour in Guayaquil



Also known as 'The Pearl of the Pacific,' Guayaquil is a bustling city rich in culture and a blend of modern and colonial architecture. As the largest and one of the oldest cities in Ecuador, it captivates visitors with its historic district, fantastic heritage sites like Santa Ana Hill, and the modern boardwalk, Malecón 2000. Additionally, the city still showcases remnants of fortifications that once protected it from pirate attacks.

TROPICAL CHOCOLATE JOURNEY

Prepare to have all your senses delighted with this combination of countryside adventures and vibrant flavors.



This journey begins with a hotel pick-up, followed by a scenic drive towards a traditional working hacienda on the countryside of the Ecuadorian Coast. Along the way, you may encounter small stands of local farms selling produce and dairy products, so a short break to enjoy a local snack is possible!

Upon arrival at Hacienda El Castillo, you will be welcomed by the lush tropical trees of banana, cacao, and balsa, accompanied by the sounds of nature including birds and howler monkeys. Originally owned by Count Von Wagenfuer and his family, this remarkable estate is now owned by a local family who focuses on sustainable agricultural development, earning them a Rainforest Alliance Certification.



The hacienda encompasses several areas, including 30 hectares of Dry Tropical Forest and about 100 hectares of cacao plantation.

Here, you will learn about the chocolate-making process from planting to drying the beans to the final chocolate product, which you will have the opportunity to taste, of course!



Take a break to explore the charming spaces of the hacienda, and then enjoy a typical lunch prepared especially for you, al-fresco, weather permitting.

Following this magnificent experience, you will be transported back to Guayaquil. Hotel drop-off marks the end of services.

INCLUDED

- Private Transportation
- Bilingual Guide
- Entrance Fees
- Bottle of water
- Chocolate Tasting & Snack
- Lunch with a soft drink

NOT INCLUDED

- Extra Meals
- Personal Expenses
- Extra Soft and/or alcoholic beverages
- Extra and/or non-scheduled visit/activity
- Tips

Notes:

The itinerary and order of visits is subject to change due to weather, municipal regulations, safety and/or unforeseen circumstances.

This tour is not available between January and April due to the rainy season of the region.