

# 5-DAY LAND BASED + DIVING

## Galapagos Hotel Based Package

**VISIT UP TO 4  
DIFFERENT ISLANDS**

---

**5 DAYS IN THE  
GALAPAGOS AT  
HOTELS ON SANTA  
CRUZ ISLAND**

---

**ENJOY YACHT  
TOURS, HIKING AND  
DIVING ACTIVITIES**



# DAY 1 (-/L/-)\*

## SANTA CRUZ ISLAND: HIGHLANDS, LAVA TUNNELS, TRAPICHE

---

**AM:** Arrival at the airport, pick up and transfer to the green highlands of Santa Cruz. The Tortoise Ranch will be waiting for us, and we will have the opportunity to explore the ranch and see many of the famous Galapagos Tortoises in the wild!

Next, we will visit the lava tunnels that were formed as the outer skin of molten lava solidified, and the liquid magma inside continued flowing, leaving behind a series of empty tubes. Visitors can walk through these underground channels!

**PM:** After lunch we will visit The Ecological Trapiche Farm where we will find several cultivated products such as sugar cane, cocoa, and other short-cycle crops, you may also see endemic bird species such as Darwin's finches, and we can participate in agricultural activities such as extracting cane juice by applying a rustic and traditional method called "Trapiche".

Transfer back to the hotel in Puerto Ayora. Overnight.



# DAY 2

(B/L/-)



Full day navigable tour to another island. After Breakfast, we will embark on an incredible adventure. These day tours visit an uninhabited island and include a nice trekking/excursion through it and the opportunity to do snorkeling. A delicious lunch is provided onboard. Return to Puerto Ayora at the end of the day.

## Day tour destinations (subject to availability):



## SANTA FE ISLAND

---

**NAVIGATION TIME: 1 HOUR, 45 MINUTES**

Santa Fe is home to a small picturesque bay and anchorage on the island's northeast coast. The bay has two visitor trails, one leading to a scenic viewpoint atop a cliff, and the other spanning from a small beach to a tall prickly pear cactus forest. Snorkeling is a must and we will see many different fish species and have the opportunity to swim with sea lions. Return to Puerto Ayora in the afternoon. Overnight.

**2 | 5-DAY HOTEL BASED + DIVING**



## BARTHOLOMEW ISLAND

---

**NAVIGATION TIME: 1 HOUR, 45 MINUTES**

Early in the morning, transfer to Baltra to start our navigable tour to Bartholomew. One of the Islands' principal attractions is the Pinnacle Rock. To see it properly we will make an easy hike for around an hour. In this excursion, we will learn from the volcanic landscape of the island and see different species such as lava lizards or cacti, once we reach the top will have a magnificent view of the Pinnacle rock in contrast with the volcanic landscape blended with the turquoise waters of the surrounding beaches. After the excursion, we will proceed to do snorkeling on one of the coral beaches. Return to Puerto Ayora in the afternoon. Overnight.



## NORTH SEYMOUR ISLAND

---

### NAVIGATION TIME: 1 HOUR

North Seymour, is a small island located northbound from Baltra. The main animal species of this island are Land Iguanas, the Magnificent Frigate bird with their incredible scarlet regular pouch, blue-footed boobies, and their particular courtship dance, and sea lions surfing across the waves. After lunch, we will do snorkeling in Bachas beach, where you will be able to discover tons of different fish and marine species, and also swim with playful sea lions. Return to Puerto Ayora in the afternoon. Overnight



## SOUTH PLAZA ISLAND

---

### NAVIGATION TIME: 1 HOUR, 20 MINUTES

South Plazas is situated on the east coast of Santa Cruz Island, it's formed from uplifted marine lava and is one of the smallest islands on the archipelago. This Island despite its size has a lot of concentration of wildlife.

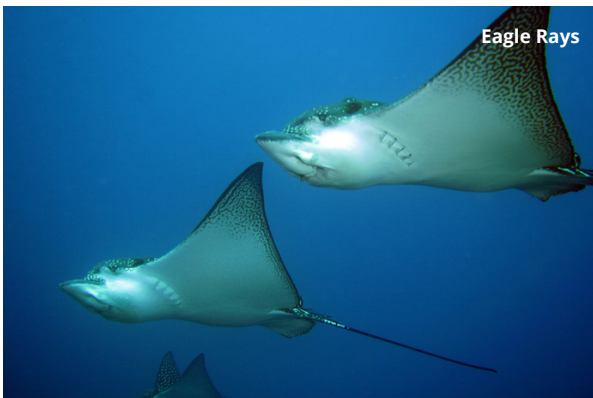
We will disembark on a small dock frequently occupied by sea lions. After this, we will continue through a small forest of prickly pear cacti with their yellow flowers where lots of land iguanas are waiting for their fruits and flowers to fall off to the ground. We continue our hike to the cliff to view swallow-tailed gulls, tropic birds, frigate birds, and pelicans. After this walk, we go back to the boat for lunch and sail to Punta Carrion for a great snorkeling session with sea turtles, white tip reef sharks, sea lions, and lots of fish. Return to Puerto Ayora in the afternoon. Overnight.

# DAYS 3 & 4

(B/L/-)

After breakfast, we will get ready for a fantastic diving day tour. These tours start with a dive and weight check, followed by the first dive immersion (depth 18-25m / 59-82ft). Then we will enjoy some snacks on board while we take a break and prepare for the second immersion (depth 18-25m / 59-82ft). Lunch is provided onboard and we will return to Puerto Ayora at the end of the tour. Overnight at selected hotel in Santa Cruz.

## Diving Site Destinations (subject to availability):

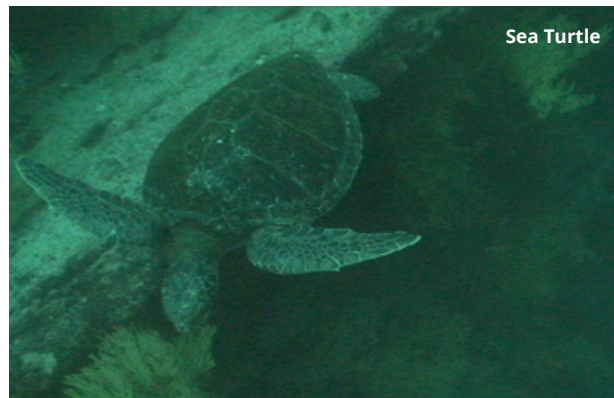


## BARTHOLOMEW

---

Moderate currents. A platform is found at approximately 10 meters depth where a variety of reef fishes reside. On the edge of this platform, there are underwater cliffs that start at about 15 meters deep with a good probability to observe pelagic species.

**Wildlife:** White-Tipped shark, reef fishes, barracudas, turtles, mobulas, sting rays and a variety of invertebrates can be found here.



## COUSINS ROCK

---

Normally there are no strong currents at this site; this is partly a reef dive, partly a wall dive where the endemic black coral is found.

**Wildlife:** Cleaning station, sea horses, barracudas, sea lions, Galapagos sharks, White-Tipped reef sharks, turtles, reef fishes, sting rays and eagle rays. We may also see Penguins on the surface as well.



White-tipped Reef Shark

## DAPHNE

Normally there are no strong currents at this site. There is a rocky, sandy bottom and a small cave found in this site, however keep in mind that this is NOT a cave dive.

**Wildlife:** It's very common to see White-Tipped reef sharks resting here. Additionally there is a pinnacle where we find a diversity of rays, Galápagos sharks, turtles, coral reef fishes, barracudas and black coral walls.



Reef Fishes

## FLOREANA

This site has a depth of 18 meters and usually, there are no strong currents present in this reef dive site with a large amount of corals and sponges around.

**Wildlife:** Cleaning station, sea lions, Galapagos sharks, White-Tipped reef sharks, turtles, reef fishes, sting rays, eagle rays and barracudas.



Sea Lion

## PUNTA CARRION

The diving site at this Point has a channel between 12 and 14 meters deep, and it is one of the quietest and safest sites for diving in Galapagos, however depending on the wind, the east side can be a bit choppy and the currents can be mild to intermediate.

**Wildlife:** White-Tipped sharks, sting rays & eagle rays, scorpion fish, reef fish, turtles and sea lions.

5 | 5-DAY HOTEL BASED + DIVING



Mobulas

## GORDON ROCKS

This rock formation is a world-renowned site for intermediate and advanced divers due to the strong currents and amazing diving sessions.

**Wildlife:** There are Hammerhead sharks and a cleaning station with plenty of fish. We will also see Galapagos sharks, White-Tipped reef sharks, mobulas, turtles, eels, barracudas and rays.

*25 logged dives or the previous evaluation/ approval of our dive guides at another site is required for this site.*



Hammerhead Shark

## MOSQUERA (NORTH)

Normally there are no strong currents at this site that has a sandy rocky bottom (about 10 meters deep), with garden eels and pelagic species. It connects with the Seymour channel, where reef fishes and Tintoreras sharks can be found.

**Wildlife:** Hammerhead sharks, Galapagos sharks, Black-Tipped reef sharks, White-Tipped reef sharks, sea lions, turtles, barracudas, reef fishes, sting rays, eagle rays, mobulas, Galápagos eels, and a variety of invertebrates.



Star Fish

## MOSQUERA (SOUTH)

Just like the north side, there are usually no strong currents at this site that has a big black coral inclination ravine of 18 meters.

**Wildlife:** Hammerhead sharks, Black-Tipped reef sharks, White-Tipped reef sharks, sea lions, sea turtles, barracudas, reef fishes, sting rays, eagle rays, mobulas, Galápagos eel and a variety of invertebrates.



Diving

## SANTA FE

This site is usually clear with calm currents, making it ideal for beginners although the topography and fauna can be interesting for intermediate divers as well.

**Wildlife:** There is a cleaning station with plenty of reef fish. Stingrays, eagle rays, turtles, eels, sea lions, White-Tipped sharks, and a variety of invertebrates can also be found here.



Yellow Tail Surgeonfish

## PLAZAS

North Plaza is a nice, easy, and relaxing dive, with relatively little current or surge. There is a boulder slope with a gradual incline that falls to a sand bottom at about 24m.

**Wildlife:** There are huge schools of yellowtail surgeonfish, yellow tailed mullets and lots of parrotfish in the shallows. Hammerhead sharks and Galapagos sharks are also common to be found here. Sea lions will be a constant companion this day and depending on the season, so will manta rays.



Black-tipped Shark



Sea Turtle

## SEYMOUR (CHANNEL)

---

This site is great for all levels of divers, although there can be strong currents at times. There are platform reefs with a diversity of fish species. It has sandy bottom with 10 meters reef where there is a lot of Tintoreras sharks and a fish cleaning station

**Wildlife:** Aside from the cleaning area, we can easily spot sea lions, Galapagos sharks, Hammerheads, Black-Tipped reef sharks, White-Tipped reef sharks, turtles, reef fishes, eels, barracudas, sting and eagle rays.

## SEYMOUR POINT

---

The point diving site of this island is a little more difficult in relation to the Channel. There is a rocky bottom with small caves at 12 meters depth, where we can find turtles and sharks.

**Wildlife:** Very similar to the channel, there is a cleaning station and we will see many sea lions, Galapagos sharks, White-Tipped reef sharks, Hammerhead sharks, mobulas, turtles, reef fishes, eels and rays.

**Important:**

- Kindly note that the day before the diving tour, all divers must go to the dive center in Puerto Ayora, in order to check and prepare our diving gear, check certification paperwork and sign waivers.
- It is mandatory to hold a diver's certification (PADI, NAUI, CMAS, etc).
- Complete the application form provided by your trip advisor
- Medical Certificate in the case of declaring any medical condition and/or people over 60 years old that have not been diving during the last 8 months.
- Minimum age to participate 10 years (please notify your trip advisor in advance, as additional waivers and costs may incur)



# DAY 5 (B/-/-)



## SANTA CRUZ ISLAND: VISIT CHARLES DARWIN RESEARCH STATION, BALTRA AIRPORT

---

After breakfast, we will be picked up and visit the Station to learn about the natural history of the Galapagos Islands and the importance of conservation efforts to protect its ecosystem. At the Tortoise Center, there are plenty of photo opportunities, we can observe the whole variety of tortoises, including hatchlings, juveniles, and full-grown individuals. Transfer to Baltra airport. End of Services.

### Notes:

- **B:** Breakfast; **BB:** Box breakfast; **L:** Lunch; **BL:** Box lunch **D:** Dinner
- Flight back to the continent should leave after 12 pm (noon), otherwise a box breakfast will be provided.
- The order of visits on this itinerary may change subject to availability, unforeseen circumstances, safety and national park regulations .

### INCLUDED

- Accommodation in a double room
- Meals as described in itinerary
- Detailed excursions
- Naturalist English-speaking guide
- transportation to sites
- Transfer to/from Baltra's airport
- Entrance fees: Highlands, Lava Tunnels
- Mask & Tube for Snorkeling in non-diving tours
- 2 Dives per day (on Diving Day Tours)
- Gear: 5- 7mm wetsuit, Regulator, BCD, mask, fins, boots, hood, textile gloves, weights, and compressed air dive tanks (on Diving Day Tours)
- Towel service (on Diving Day Tours)

### NOT INCLUDED

- Air tickets to/from Mainland / Galapagos
- Galapagos National Park Entrance Fee: \$100 (Subject to change) per person
- Migratory Control Card: \$20.00 per person
- Wetsuit (for non-diving tours)
- Dinner, Soft and alcoholic drinks
- Personal expenses and tips
- Dive insurance
- DIN Adaptor, NITROX tanks & Dive Computer